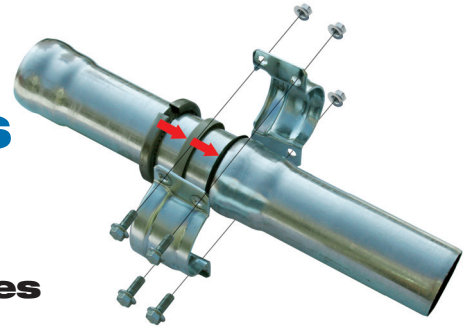


LORO-XP pressure pipe clamps DN 50 - DN 125



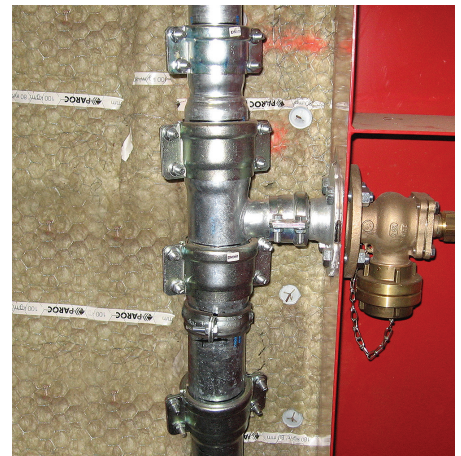
The new solution for fire extinguishing lines in ship construction.

In times of high cost pressure the workflow in ship construction needs to be optimized. New build or retrofit projects call for up-to date engineered systems that can be installed in a simple, safe and speedy way.

As a part of the LORO-X galvanised steel/LORO-XCL stainless steel drainage pipe programm, LOROWERK has developped a new pipe system called LORO-XP pressure pipe. This pipe system with especially small dimensional tolerances is lightweight, flexible, pressure-resistant, safe and tested according to IACS-standards.

Due to the Loro-XP push-fit socket pipe installation is simple and fast: The Loro-XP pipes can be cut to length accurately, the pressure pipe clamp is easily attached.

Bends, branches, deck- and bulkhead penetrations, transition pieces and flanges complete the whole system of Loro-XP pipes and ensure an economic and effective installation of the fire extinguishing line.

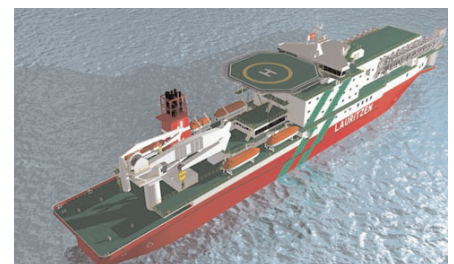


Advantages:

- **Remarkably lighter than conventional systems**
- **Fast and easy installation due to push-fit socket system**
- **No welding joints or compression fittings**
- **No prefabrication**
- **Testing pressure for pressure pipe clamp:**
48 bars (696 psi)
- **Tested and certified according to IACS P 2.1 1**
(safety factor 4)
- **Changes or customizing of the system possible**
at any time
- **ONE system for new construction, remodelling**
and repair

The advantages of the Loro-XP system have convinced the shipyard **Blohm & Voss Repair**. They have employed the Loro-XP system for the fire extinguishing lines converting the former cable ship KRAKA into the universal supply ship DAN SWIFT.

The advantages of the Loro-XP pipe system have also been confirmed by the installation company **"Knaack & Jahn Schiffbau"** of Hamburg, Germany.



LOROWERK K.H. Vahlbrauk GmbH & Co. KG

Kriegerweg 1 • 37581 Bad Gandersheim, Postfach 13 80 • 37577 Bad Gandersheim
Tel. +49(0)53 82.710 • Telefax +49(0)53 82.712 03 • Internet: www.loro.de • e-mail: infocenter@lorowerk.de